

# REPLACEMENT PARTS, ACCESSORIES AND OPTIONS

(See Item numbers on Exploded Diagram for part location)

<u>ITEM</u>	<u>PART NUMBER</u>	<u>PART DESCRIPTION</u>
1	PU-HLUF	Hopper Lid
2	PU-62-40-151-3	Hopper Lid Latch
3	PU-HCUF	Hopper Cover
4	PU-RAPTUF	Rear Access Panel - Top
5	PU-RAPBUF	Rear Access Panel - Bottom
6	CU-047042	2.4 RPM Auger Motor
7	PU-LSPUF	Left Side Panel
8	PU-LCPUF	Left Side Cover Plate
9	PU-076002B	Combustion Blower
10	PU-CBG	Combustion Blower Gasket
	PU-CMG	Combustion Motor Gasket
11	PU-AFUF	Auger
12	PU-HFGUF	Hopper Flange Gasket
13	PU-CH6	Igniter
14	PU-HOPUF	Hopper
	PU-HLG	Hopper Lid Gasket (not shown)
15	CU-VS	Vacuum Switch
	PU-VH	Vacuum Hose (not shown)
16	PU-CB240-06	Control Board
17	PU-4C447	Convection Blower
18	PU-RSPUF	Right Side Panel
19	PU-RCPUF	Right Side Cover Plate
20	AC-GSC	Glass Supports for CA-13C Door
21	AC-G10	Glass with Gasket
	AC-GGK	Glass Gasket Kit (gasket only, no glass) (not shown)
22	CA-13C	Door
	AC-DGKNC	Door Gasket Kit (not shown)
23	PU-APUF	Ash Pan
25	PU-ADPUF	Air Deflector Plate
26	PU-BPUF	Burn Pot
27	CU-ADP	Ash Dump Plug
28	CA-ATUF	Auger Tube Assembly
	CU-RG	Rubber Gasket (not shown)
	PU-ATGUF	Auger Tube Gasket (not shown)
	PU-GP	Guide Plate (not shown)
	PU-PGB52	Exhaust Tube Gasket (not shown)
29	CA-AMPP	Auger Mounting Plate
30	CA-AC	Auger Coupler
31	AC-HLS	Hopper Lid Switch
	PU-CBF6	6 AMP Control Board Fuse (not shown)

## OPTIONS:

	PU-OAK	Outside Air Kit (Included with Stove!!) (not shown)
	AC-3000	3" Pellet Vent Kit (Through-the-Wall) (not shown)
	GU-1E30-914	Wall Thermostat (not shown)
	AC-118	Brass Window Trim (not shown)
	AC-119	Brass Lip Trim (not shown)
24	AC-03	Brass knob for ash drawer
24	AC-03BN	Brushed Nickel knob for ash drawer

If you have any questions or problems contact the Customer Service Department:

**Customer Service Department**

**P.O. Box 206**

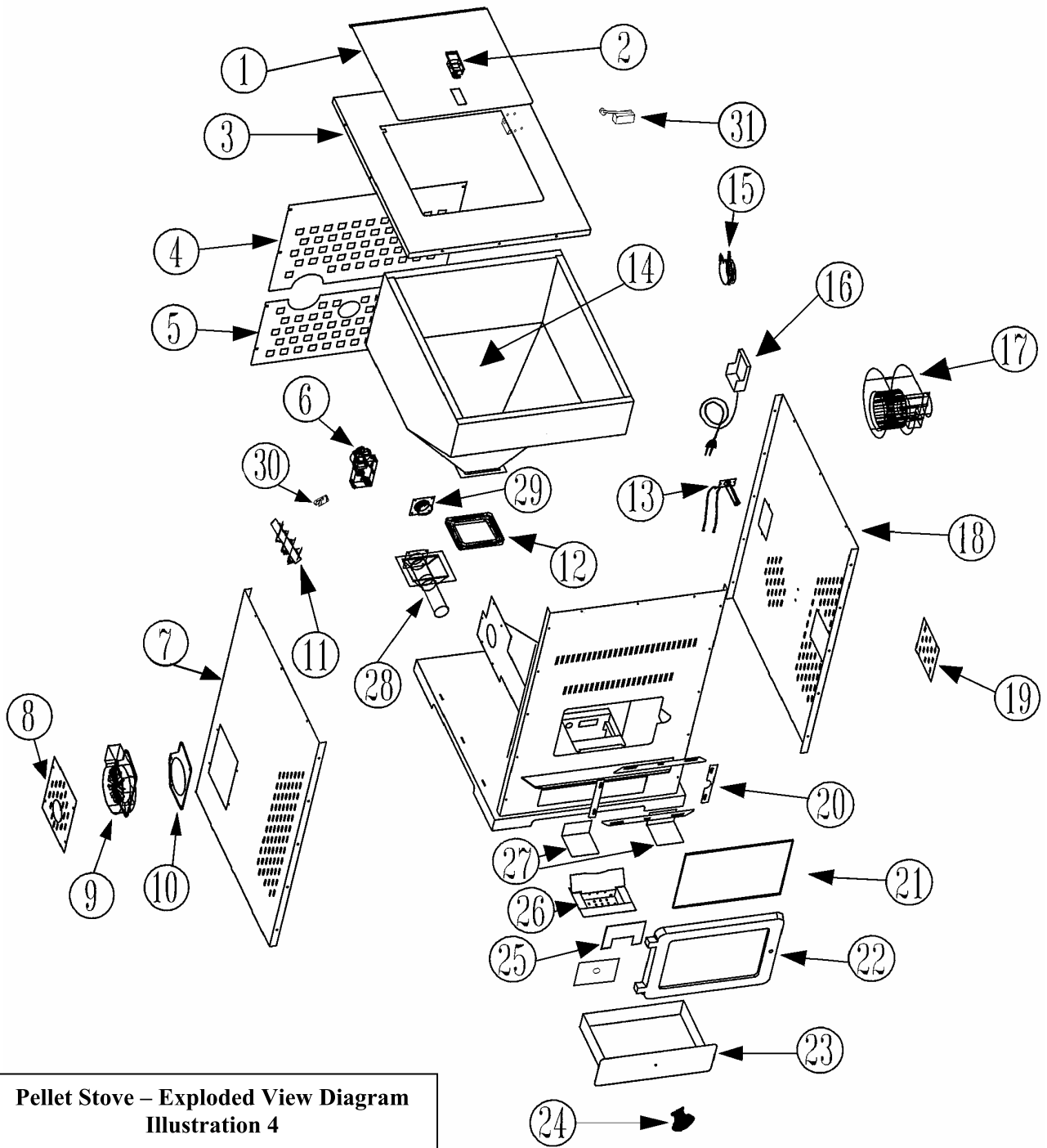
**Monroe, VA 24574**

[service@englanderstoves.com](mailto:service@englanderstoves.com)

**Parts Orders ONLY: 800-516-3636**

**Questions: 800-245-6489 (Fax: 434-929-4810)**

You may also order parts and options, view frequently asked questions and more, on our web site: [www.englishstoves.com](http://www.englishstoves.com)



**Pellet Stove – Exploded View Diagram  
Illustration 4**

Dimensions of your pellet unit:

27 ½"W x 40 ½"H x 30 ½"D

360 lbs.

Hopper capacity:

(Approx. 14" height from floor to center of exhaust)  
Approximately 240 lbs (this can vary widely depending on pellet size, length and diameter)

EPA Status:

Exempt

BTU Range:

8500 to 56000

Burn Rate:

Approximately 1 to 5 lbs. per hour